

Copyrighted Material

# PREFACE TO SHAKESPEARE



SAMUEL JOHNSON

Copyrighted Material

# Preface to Shakespeare by SAMUEL JOHNSON

Published - 1765

Divided into Three Parts :

**1.  
Shakespeare's  
Excellency**



**2.  
Shakespeare's  
Faults**



**3. The Three  
Unities (Time,  
Place & Action  
)**

# Questions ???

**1. Date of Birth and Death of Shakespeare**  
.....



**Three Parts of the essay**  
.....?

# Shakespeare's Excellency

**Representation of  
General Nature and  
Universal Appeal .**

**Dialogues are  
actual  
conversation  
of People**

**Reflection  
of Life and  
Human  
Nature**



# Questions

???

1. Shakespeare is  
..... ??
2. What make  
Literature Great ?
3. Which part do  
you like most of the  
excellency?

# Shakespeare's Faults

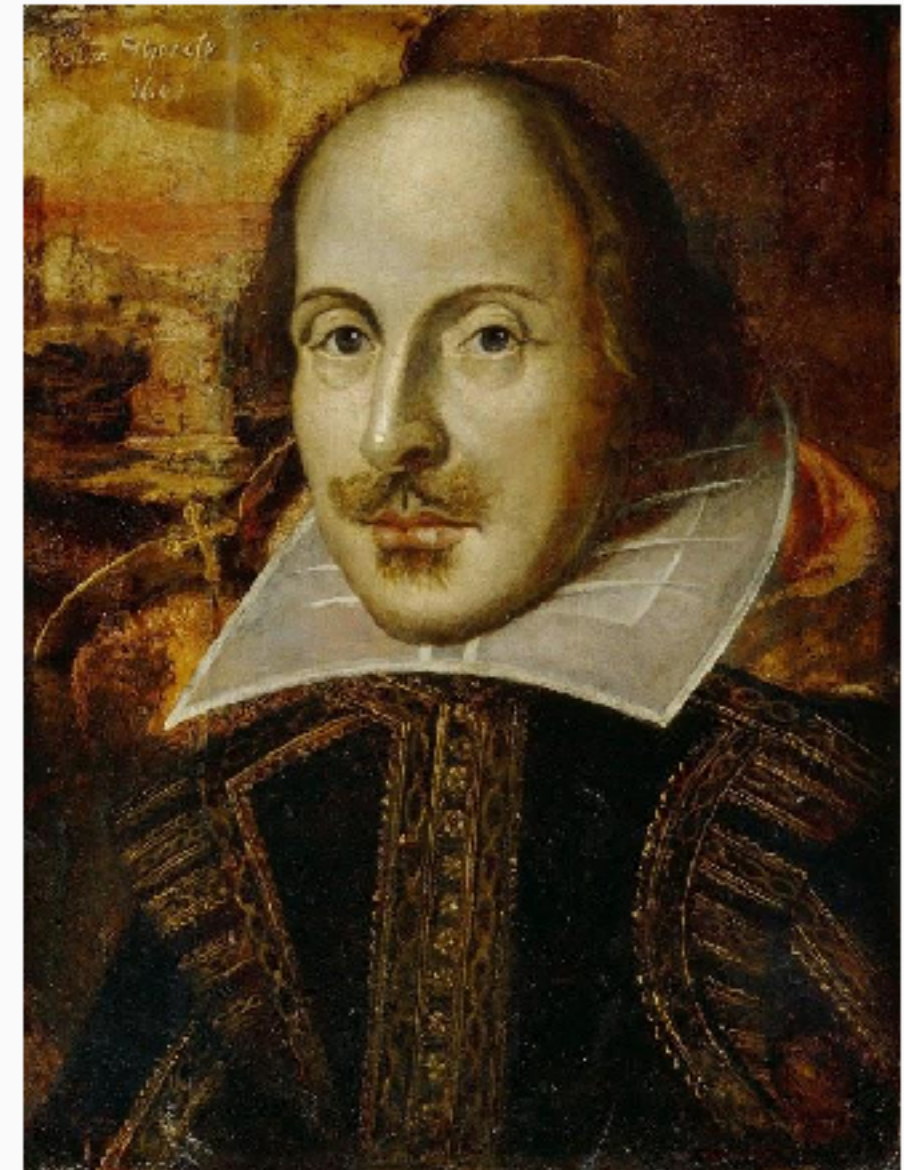
**Defective  
Plot**

**No moral  
purpose**

**Latter  
part is  
neglected**

**Archaic  
Language**

**Expression For  
Quibble**





# Questions ???

**Do you think  
Moral  
purposes are  
unavoidable in  
a play ?**



**For a tragedy, What  
is the most  
important part ?**

- 1. Plot**
- 2. Characters**

# CLASSICAL UNITIES

THE CLASSICAL UNITIES, ARISTOTELIAN UNITIES,  
OR THREE UNITIES  
ARE RULES FOR DRAMA DERIVED FROM A PASSAGE IN ARISTOTLE'S POETICS

UNITY OF ACTION:



A PLAY SHOULD HAVE  
ONE ACTION THAT IT FOLLOWS,  
WITH MINIMAL SUBPLOTS

UNITY OF TIME:



THE ACTION IN A PLAY SHOULD  
OCCUR OVER A PERIOD OF NO  
MORE THAN 24 HOURS

UNITY OF PLACE:



A PLAY SHOULD EXIST IN  
A SINGLE PHYSICAL SPACE

# Three Unities

Place



One place

Time



24 Hours

Action



One Plot

## Johhson's opinion about Three Unities

Unity of Action



Unity of Time



Unity of Place



Objection against the unity of Place

Objection against the unity of Time

OPINION



