

Fabric-1 (Lab)

Exp. Name: Study on Suttle

Exp. Name: Study on machine profile and Primary Single Jersey circular knitting m/c.

\* KUAN CHUNG International Co, LTD.

• Diameter → 30" F

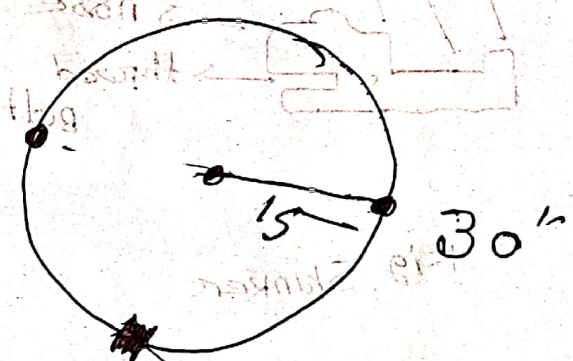
• GAUGE → 24 GB

• FEEDER → 120

• model → KC-S4F

• Date → 05-7-2000

• M/NO. → KC-5565



8F, No. 546, DA AN RD., Shulin City Taipei Hsien

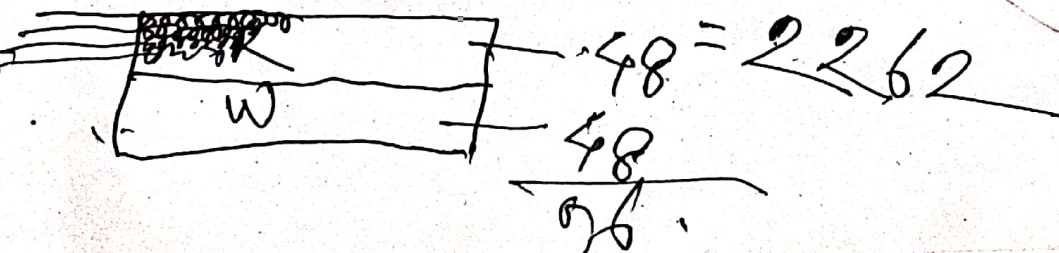
Taiwan,

TEL: 886-2-26827379,

Fax: 886-2-26827839.

T.D

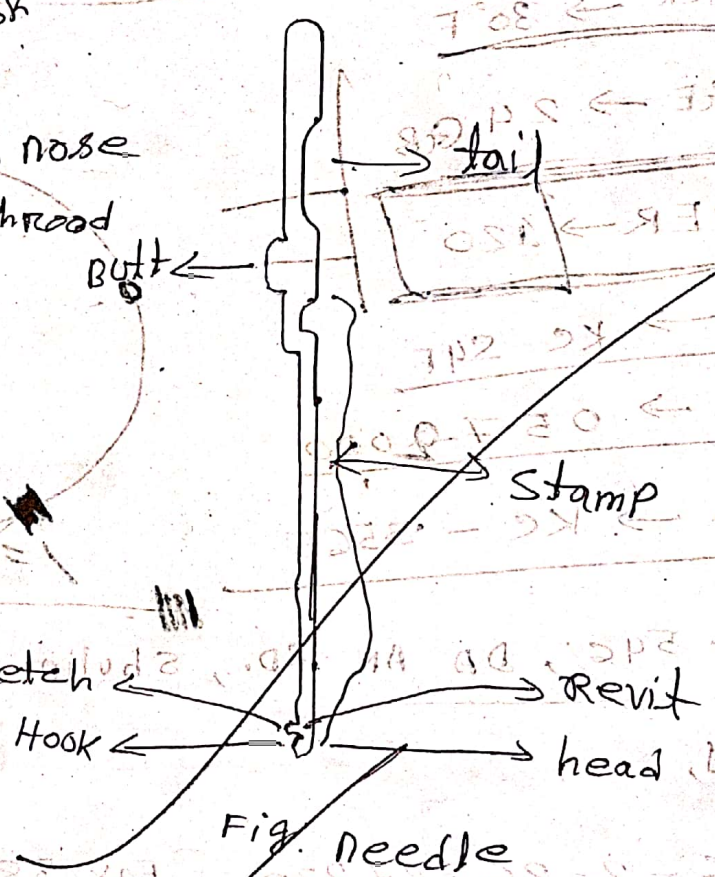
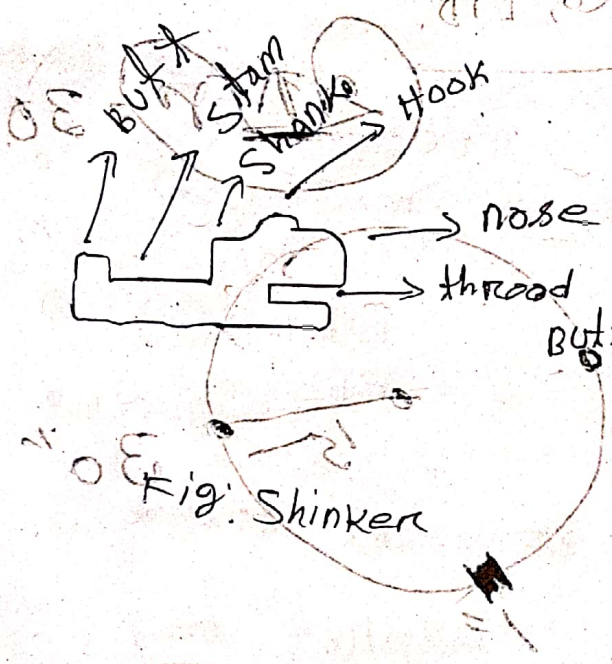
3.1416 x 30 x 24



Primary element of knitting m/c:

Primary element 3 প্রকার:

- 1) Needle
- 2) Shinker
- 3) Cam



• Needle 3 प्रकार:

- i) Las needle
- ii) Beard needle
- iii) compound needle

• Cam 3 प्रकार:

- i) knit cam
- ii) Tuck cam
- iii) miss cam

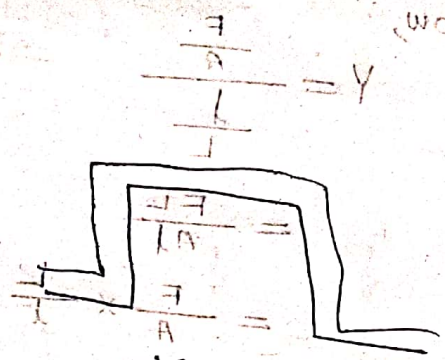


Fig: Tuck cam

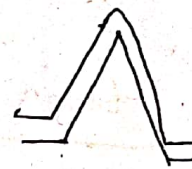


Fig: Cam

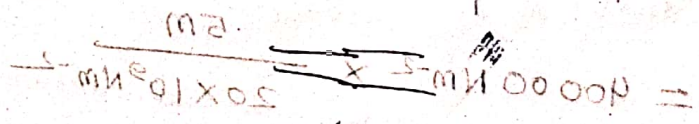


Fig: miss cam