

Exp name: Traverse motion of, pirun, winding machine

Machine parts

(i) Motor

(ii) Motor pully

(iii) v-belt

(iv) Machine pully (8x8)

(v) Shaft

(vi) v-pully

(vii) Cam moving pully

(viii) Cam box

(ix) Straight cut gear-1

(x) Straight cut gear-2

(xi) Cam

~~x Cam counting rod~~

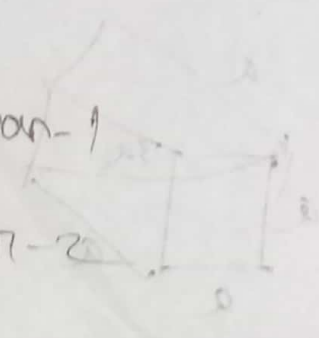
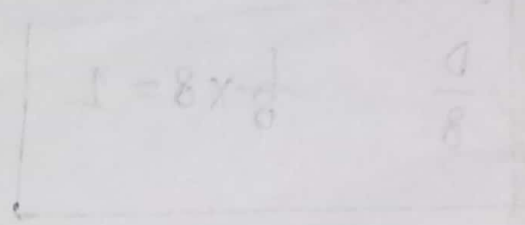
~~(xii) Cam connecting rod~~

* Cam connecting rod

* Key

* Travers connecting rod - 1

~~x Travers connecting rod - 2~~



* T-lever

* Travers body

* Travers bar