

# Lecture-2

## Chapter-1

Computer Architecture and Organization-Jhon  
P. Hayes

# Evolution of Computers

# The Evolution of Computers

Calculating machines capable of performing the elementary operations of arithmetic (addition, subtraction, multiplication and division) appeared in the 16<sup>th</sup> century and perhaps earlier (Randell 1982; Augarten 1984).

The French philosopher Blaise Pascal (1623 - 62) invented an early and influential mechanical calculator that could add and subtract decimal numbers.

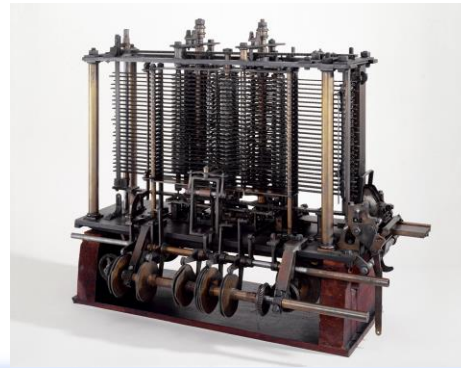


# The Mechanical Computer

## Babbage's Difference Engine

In the 19<sup>th</sup> century Charles Babbage designed the first computers to perform multistep operations automatically, that is, without a human intervening in every step. Again the technologies were entirely mechanical.

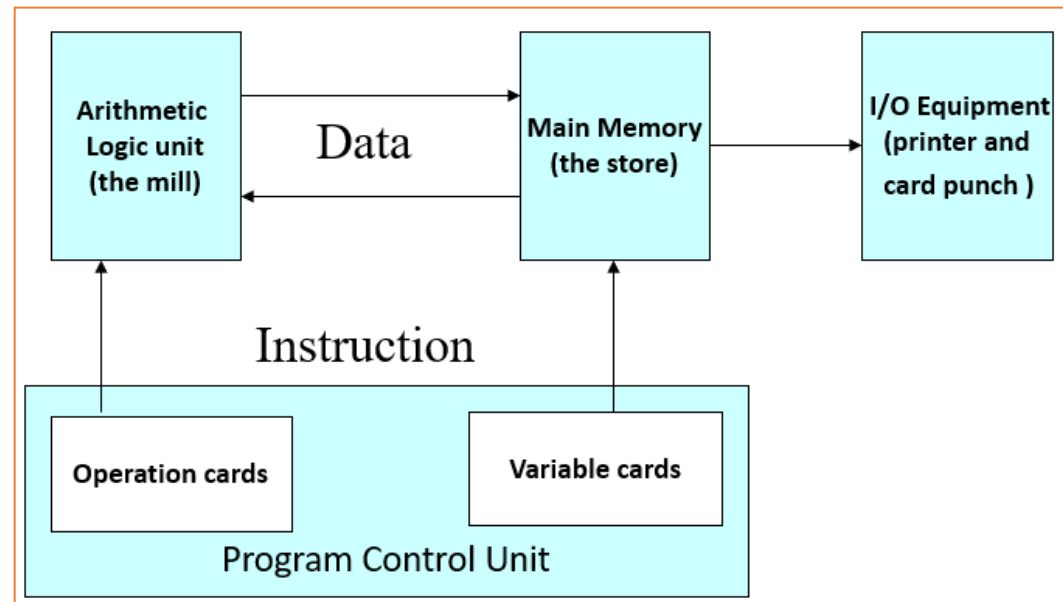
Babbage's first computing machine, which he called the Difference Engine, was intended to compute and print mathematical tables automatically. It performed only one arithmetic operation: addition.



# The Mechanical Computer

## The Analytical Engine

Another reason for Babbage's failure to complete his Difference Engine was that he conceived of a much more powerful computing machine that he called the Analytical Engine. This machine is considered to be the first general purpose programmable computer ever designed.



Structure of Babbage's Analytical Engine

# Electronic Computer

A mechanical computer has two serious drawbacks:

- Its computing speed is limited by the inertia of its moving parts, and
- The transmission of digital information by mechanical means is quite unreliable.

In an electronic computer, on the other hand, the *moving parts* are electron, which can be transmitted and processed reliably at speeds approaching that of light (300,000 km/s). Electronic devices such as the vacuum tube of electronic valve, which was developed in the early 1900s, permit the processing and storage of digital signals at speeds far exceeding those of any mechanical device.

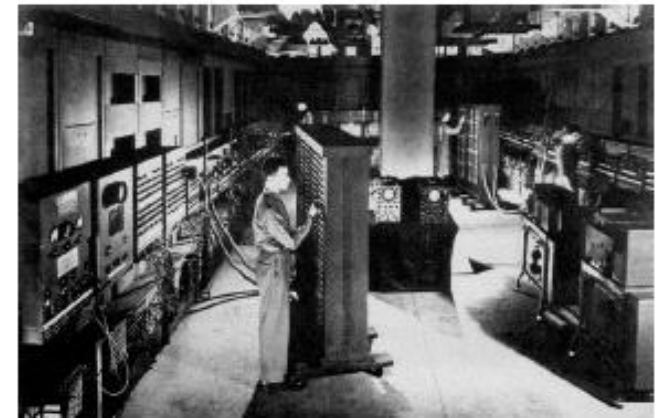
# Electronic Computer

## Computer Generations

1. First Generation 1944 to 1958 – Vacuum Tubes
2. Second Generation 1959 to 1963 – Transistor
3. Third Generation 1964 to 1970 – Integrated Circuit (IC)
4. Fourth Generation 1971 to Now –  
Large Scale Integration (LSI) or  
Very Large Scale Integration (VLSI)
5. Fifth Generation – Artificial Intelligence (AI)

# First Generation Computers

- The first widely known general-purpose electronic computer was the Electronic Numerical Integrator and Calculator (**ENIAC**) that John W. Mauchly and J. Presper Eckert built at the University of Pennsylvania.
- Like Babbage's Difference Engine, a motivation for the ENIAC was the need to construct mathematical tables automatically for U.S. Army.
- Work on the ENIAC began in 1943 and was completed in 1946.
- It was an enormous machine weighting about 30 tones and containing more than 18,000 vacuum tubes
- It was also substantially faster than any previous computer. While the Harvard Mark I required about 3 s to perform a 10-digit multiplication, the ENIAC required only 3 ms.



# First Generation Computers

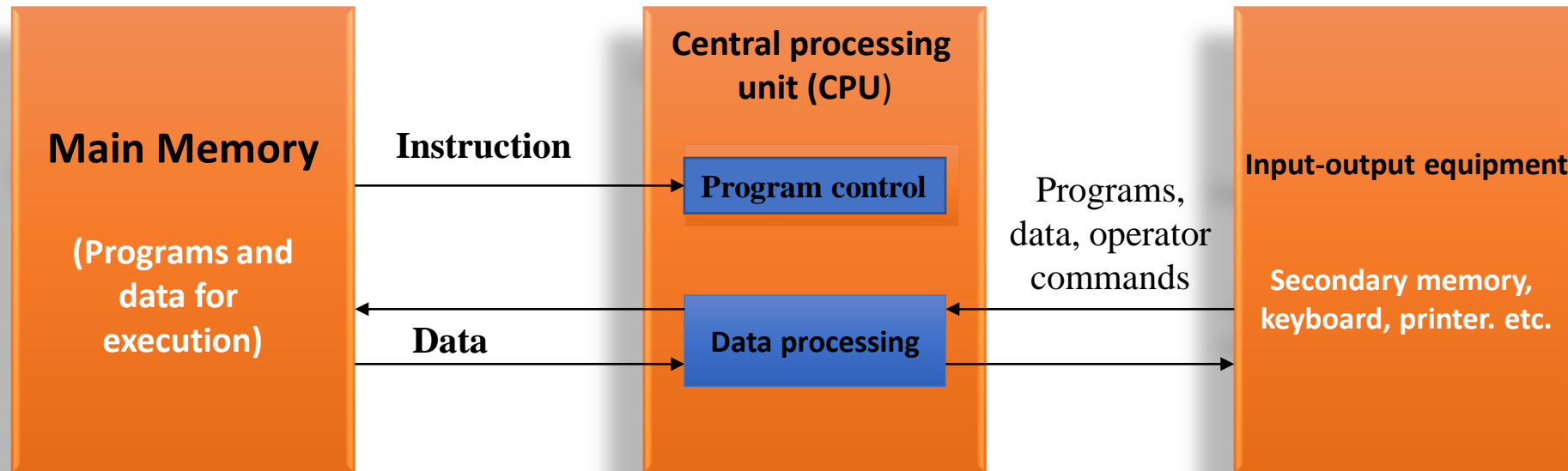


Fig 1.2 Organization of a first-generation computer



# First Generation Computers

- The earliest computer had their instructions written in binary code known as machine language that could be executed directly.
- Machine-language programs are extremely difficult for humans to write. A substantial improvement is obtained by allowing operations and operand addresses to be expressed in an easily understood symbolic form such as:

**ADD X1, X2**

- This symbolic format is referred to as an *assembly language* (1950s) as computer programs were growing in size and complexity.
- An assembly language requires a special “system” program (*an assembler*) to translate it into machine language before it can be executed.
- First-generation computers were supplied with almost *no system software*; often little more than an assembler was available to the user.

# First Generation Computers

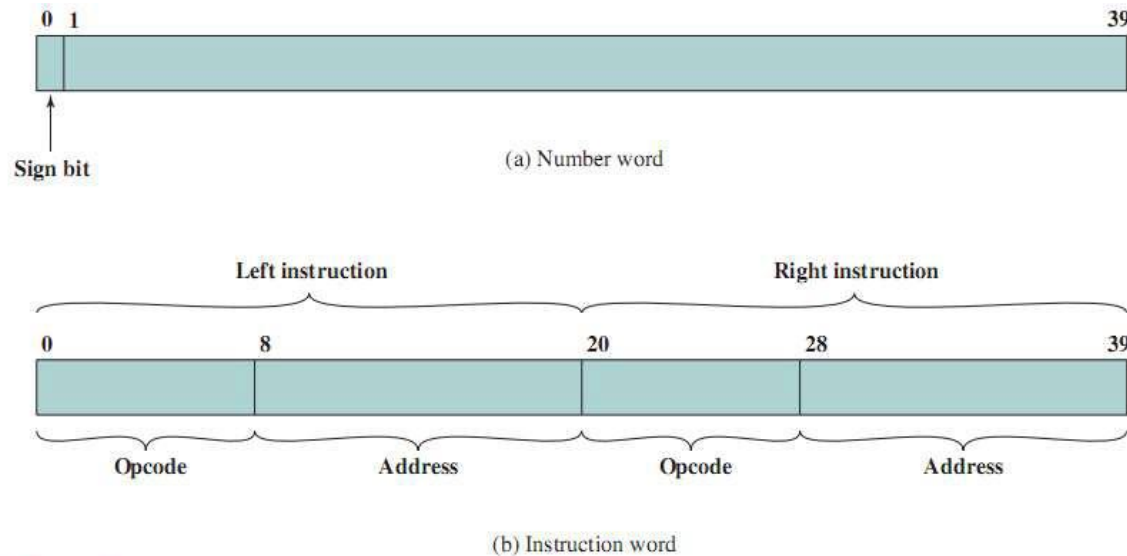
- In 1946, von Neumann and his colleagues began the design of a new stored-program computer, referred to as the IAS computer, at the Princeton Institute for Advanced Studies.
- The basic unit of information in the IAS computer is a 40-bit word, which is used to transfer information between the CPU and the main memory M. Each location in M can be used to store either a single 40-bit number or else a pair of 20-bit instructions.
- Numbers are usually treated as signed binary fractions lying between -1 and +1, but they can also be interpreted as integers. Examples of the IAS's binary number format are:

0110100000 0000000000 0000000000 0000000000 = +.8125

1001100000 0000000000 0000000000 0000000000 = -.8125

# First Generation Computers

Each number is represented by a sign bit and a 39-bit value. A word may also contain two 20-bit instructions, with each instruction consisting of an 8-bit operation code (opcode) specifying the operation to be performed and a 12-bit address designating one of the words in memory (numbered from 0 to 999). The control unit operates the IAS by fetching instructions from memory and executing them one at a time.



# First Generation Computers

The IAS have two key aspects which are:

- The CPU contains a small set of high speed storage devices called **registers** which serve as implicit storage locations for operands and results.
- A program's instructions are stored in **M** in approximately the sequence in which they are executed.

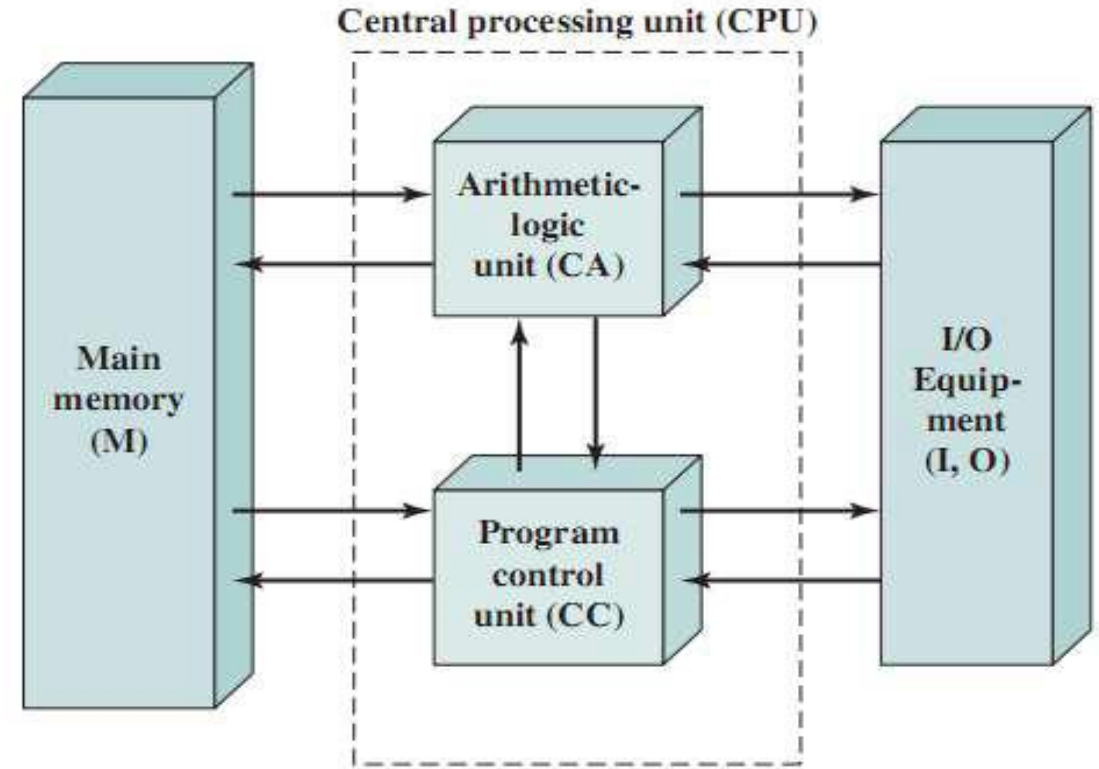


Fig: Structure of IAS Computer

# First Generation Computers

## limitation of first generation:

- IAS computer has no special registers for index control, which eliminates the need for address-modify instructions.
- Less CPU registers and no cache memory.
- No facilities were for structuring programs.
- The instruction set is biased toward numerical computation Program for non-numerical tasks such as text processing were difficult to write and executed slowly.
- Input-output (I/O) instructions were considered of minor importance.

# Second Generation Computers

- Computer hardware and software evolved rapidly after the introduction of the first commercial computers around 1950.
- The vacuum tube quickly gave way to the transistor.
- A transistor serves as a high-speed electronic switch for binary signals, also it is smaller, cheaper and requires much less power than a vacuum tube.
- Magnetic disks became the principal technology for secondary memories.
- In Second Generation Computer more registers were added to the CPU to facilitate data and address manipulation compare to IAS. For an example, Index registers.
- Index registers make it possible to have indexed instructions, which increment or decrement a designated index I before (or after) they execute their main operation.

# Second Generation Computers

## Programming Language:

- High Level Programming Language introduced mid 1950 are far easier to use than assembly language.
- A high level language is intended to be usable on many different computers.
- A special program called a compiler translates user program from high-level language into machine language.
- First successful high-level language was FORTRAN (FORmula TRANslation) developed by an IBM group under the direction of John Backus from 1954 to 1957. It permits only numerical operations.
- First business application high-level language was COBOL (Common Business Oriented Language), manufacturers in 1959 and sponsored by the US Department of Defense. It permits both textual as well as numerical operations.
- Mid 1990s Basic, Pascal, Modula 2, C, and Java to became more popular high level language.

# Second Generation Computers

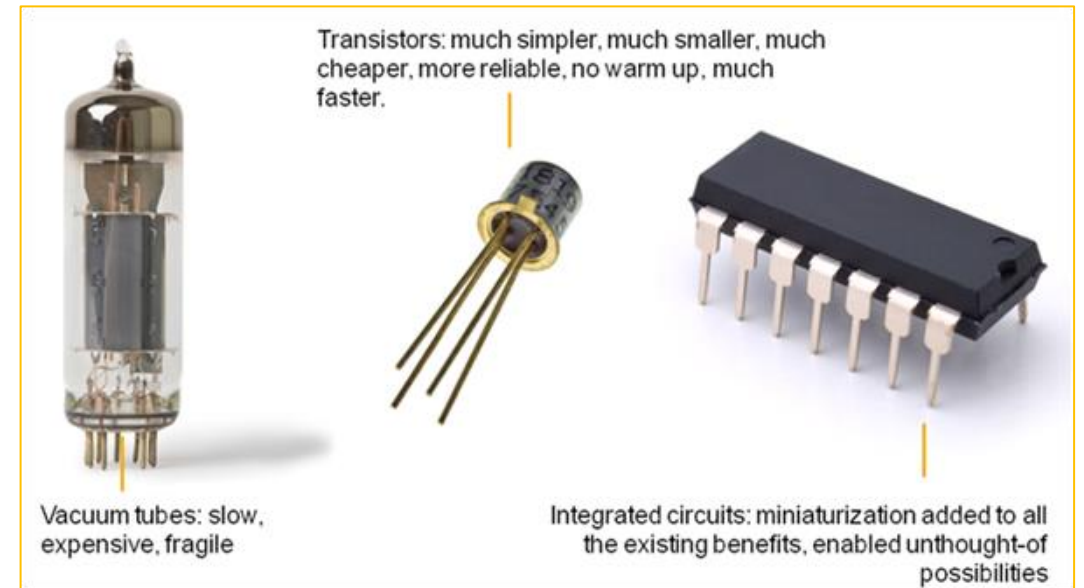
## System management (**Batch Processing**):

- With the improvement of I/O equipment and programming methodology that came with the second-generation machines, it became feasible to prepare a batch of jobs in advance, store them on magnetic tape and then have the computer process the jobs in one continuous sequence, placing the results on another magnetic tape. This mode of system management is termed **batch processing**.
- Batch processing requires the use of a supervisory program called a batch monitor, which is permanently resident in main memory.
- A batch monitor is a basic version of an operating system. Later computer introduce multiprogramming and time-sharing systems.



# Third Generation-Integrated Circuit

- Integrated Circuits (IC), which first commercially appear in 1961 to replace transistor used in second generation.
- The transistor continued as the basic switching device, but IC allowed large numbers of transistor associated components to be combined on a tiny piece of semi conductor material, usually silicon.
- IC technology initiated a long-term trend in computer design toward smaller size, higher speed and lower hardware cost.



# Third Generation-Integrated Circuit

## Structure of the IBM System/360

- In next Figure the IBM System/360 model were designed to be software compatible with one another, meaning that all models in the series shared a common instruction set.
- Programs written for one model could be run without modification on any others. Only the execution time, memory usage and the like would change.
- Software compatibility enabled computer owners to upgrade their systems without having to rewrite large amounts of software.
- The System/360 models also used a common operating system, OS/360 and the manufacturer supplied specialized software to support such widely used applications as transaction processing and database management.

# Third Generation-Integrated Circuit

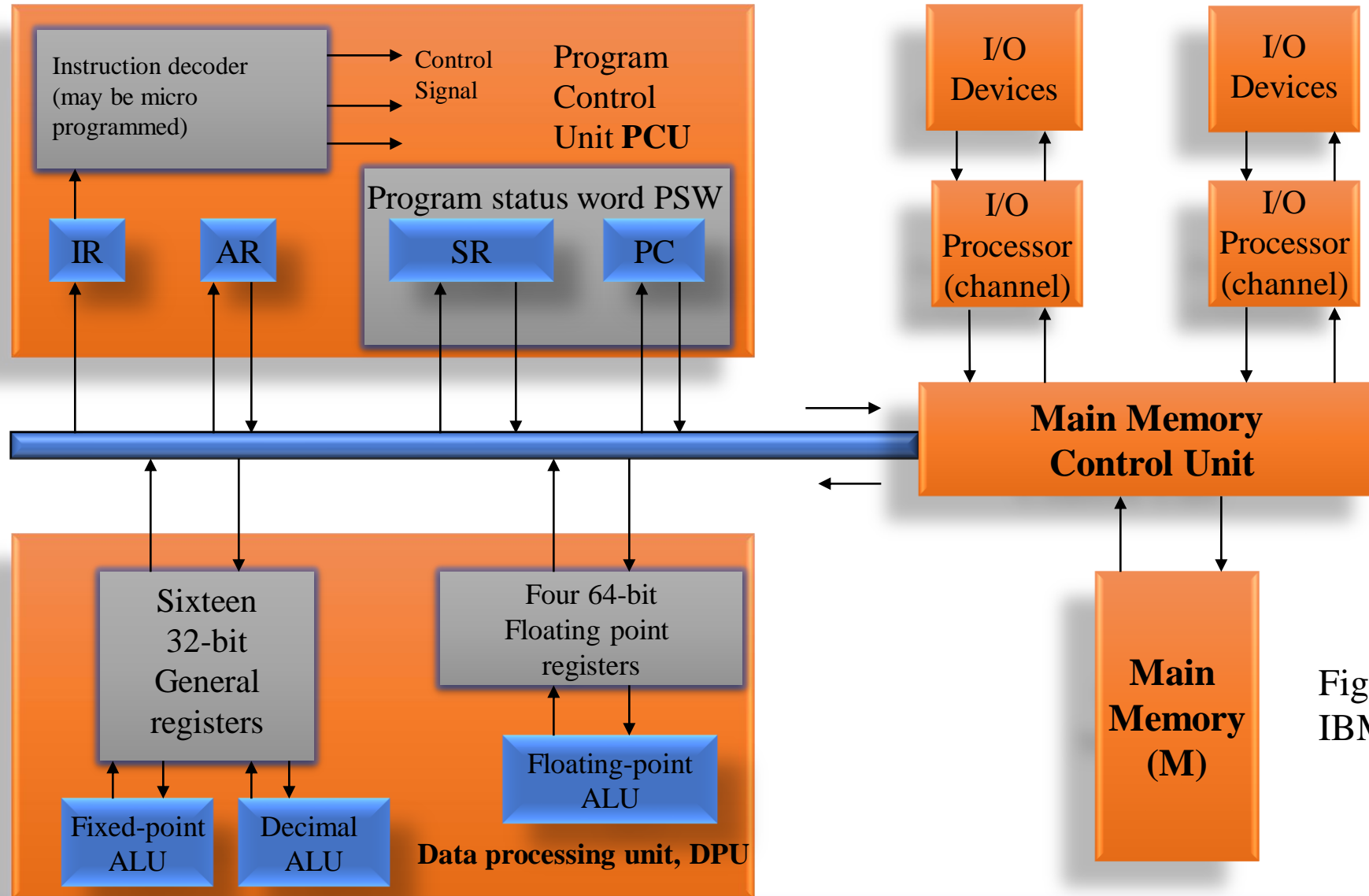


Fig: Structure of IBM System/360

# Third Generation-Integrated Circuit

## Structure of the IBM System/360

- The System/360 series evolved into various newer mainframe computer series introduced by IBM over the years, all of which maintained software compatibility with the original System/360.
- It had about **200 distinct** instruction types (opcodes) with many addressing modes and data types, including fixed-point and floating-point numbers of various sizes.
- It has 16 identical general-purpose registers, all individually addressable. This is called the *general-register organization*.
- The System/360 had separate **arithmetic-logic units** for processing various data types.
- The **8-bit unit** byte was defined as the smallest unit of information for data transmission and storage purposes.

# Third Generation-Integrated Circuit

## Structure of the IBM System/360

- The CPU had **two major control states**: a supervisor state used by the operating system and a user state for executing application program.
- Certain program control instruction were “privileged” in that they could be executed only when the CPU was in supervisor state. These and other special control states gave rise to the concept of a **program status word** (PSW) which was store in a special CPU register, now generally referred to as a **status register** (SR).
- The SR register encapsulated the key information used by the CPU to record exceptional conditions such as CPU-detected errors.

# Fourth Generation-Very Large Scale Integration

- VLSI allows manufacturers to fabricate a CPU main memory or even all the electronic circuits of a computer on a single IC that can mass-produced at very low cost.
- An IC is an electronic circuit composed mainly of transistors that is manufactured in a tiny rectangle or chip of semiconductor material.
- The IC is mounted into a protective plastic or ceramic package, which provides electrical connection points called *pins or leads* that allow the IC to be connected to other ICs to input-output devices like a keypad or screen or to power supply.
- A *multichip module* is a package containing several IC chips attached to a substrate that provides mechanical support, as well as electrical connections between the chips.

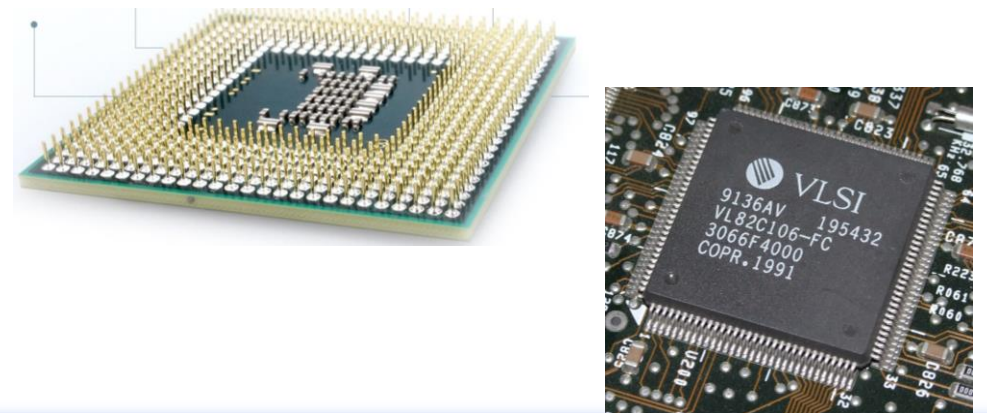
# Fourth Generation-Very Large Scale Integration

- Packaged ICs are often mounted on a *printed circuit board* that serves to support and interconnect the ICs.
- A contemporary computer consists of a set of ICs, a set of I/O devices and a power supply. The number of ICs can range from one IC to several thousand, depending on the computers size and the types of use.
- *IC density*: An integrated circuit is roughly characterized by its density, define the number of transistor contained in the chip.
- The first commercial IC appeared in 1961 – contained fewer than 100 transistors and employed *small-scale integration* or *SSL*.
- The Terms *medium-scale*, *large-scale* and *very-large-scale integration* (*MSI*, *LSI* and *VLSI* respectively) are applied to ICs containing hundreds, thousands and millions of transistors respectively.

# Fourth Generation-Very Large Scale Integration

There are two of the densest chip:

- The *dynamic random-access memory* (DRAM), a basic component of main memories.
- A single chip CPU or *microprocessor*.
- *IC families*: There are two important technology in IC families which are *bipolar* and *unipolar*.
- Unipolar is normally referred to as MOS (metal-oxide-semiconductor) after its physical structure.
- Both bipolar and MOS circuits have transistors as their basic elements.





# Categories of Computers

- Microcomputers
- Minicomputers
- Mainframe Computers
- Supercomputers

That's All  
Thank You