

## Basic Anatomy

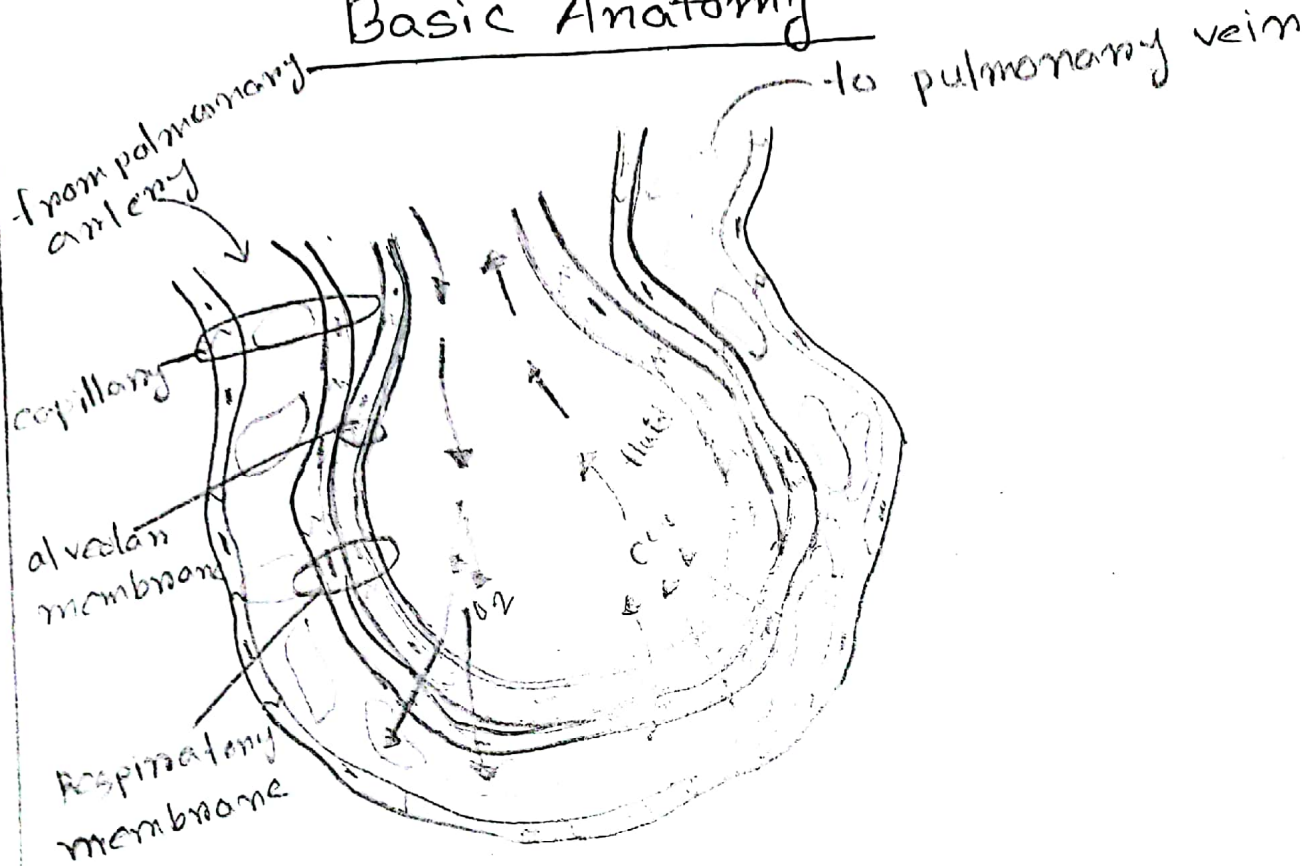


fig- Gas exchange between Alveoli and capillaries.

From heart  $\text{CO}_2$  contained blood go to lung through pulmonary artery. when we exhale or inhale. inhaled air flow through the respiratory tract into the air sac.  $\text{O}_2$  rich dissolved into the blood. In this mean time  $\text{CO}_2$  rich blood diffused in Alveoli. After this process  $\text{O}_2$  blood went to body through pulmonary vein.