

Gas exchange - alveoli

alveoli - 3

From Pulmonary artery

To Pulmonary Vain

alveoli

Capillary

Alveolar membrane

Respiratory membrane

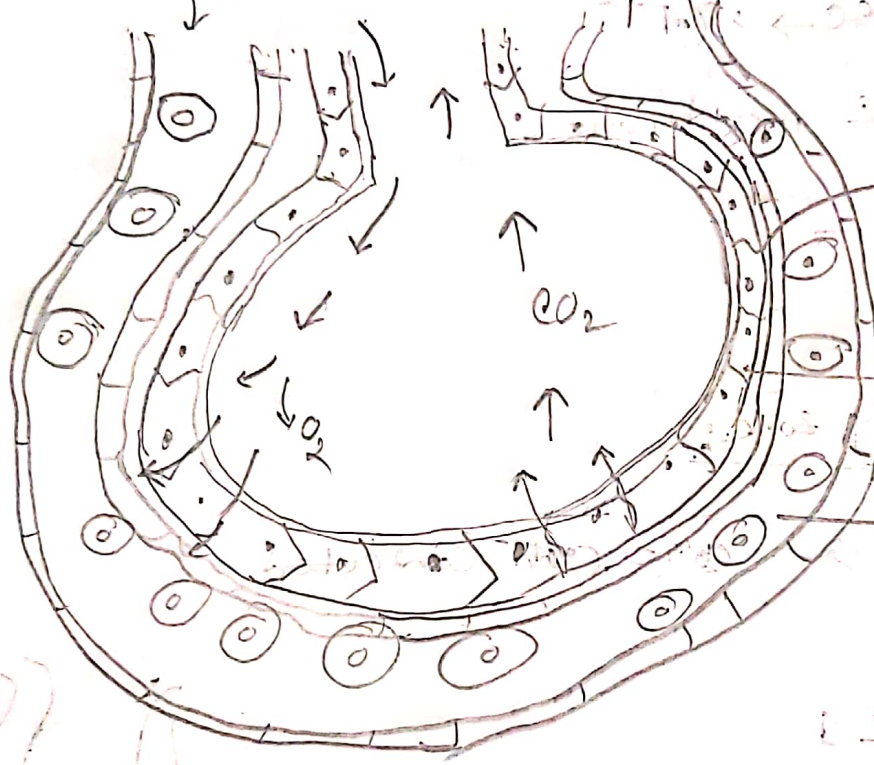


Fig: Gas exchange between alveoli and capillaries.

respiratory

respiratory



alveoli

capillary

alveoli

capillary

alveoli

capillary

From heart contaminated blood (CO_2 containing blood) go to the lungs by Pulmonary artery.

When we breathe, inhaled air flow through, the respiratory tract into the air sac. O_2 in the inhaled air dissolves with the contaminated blood. Since the O_2 concentration is higher than blood that's why O_2 diffused in blood.

In this some time, the concentration is high, that why CO_2 diffused in water.

Now the CO_2 and O_2 is exchanged
The fresh blood go to the Pulmonary
Vein