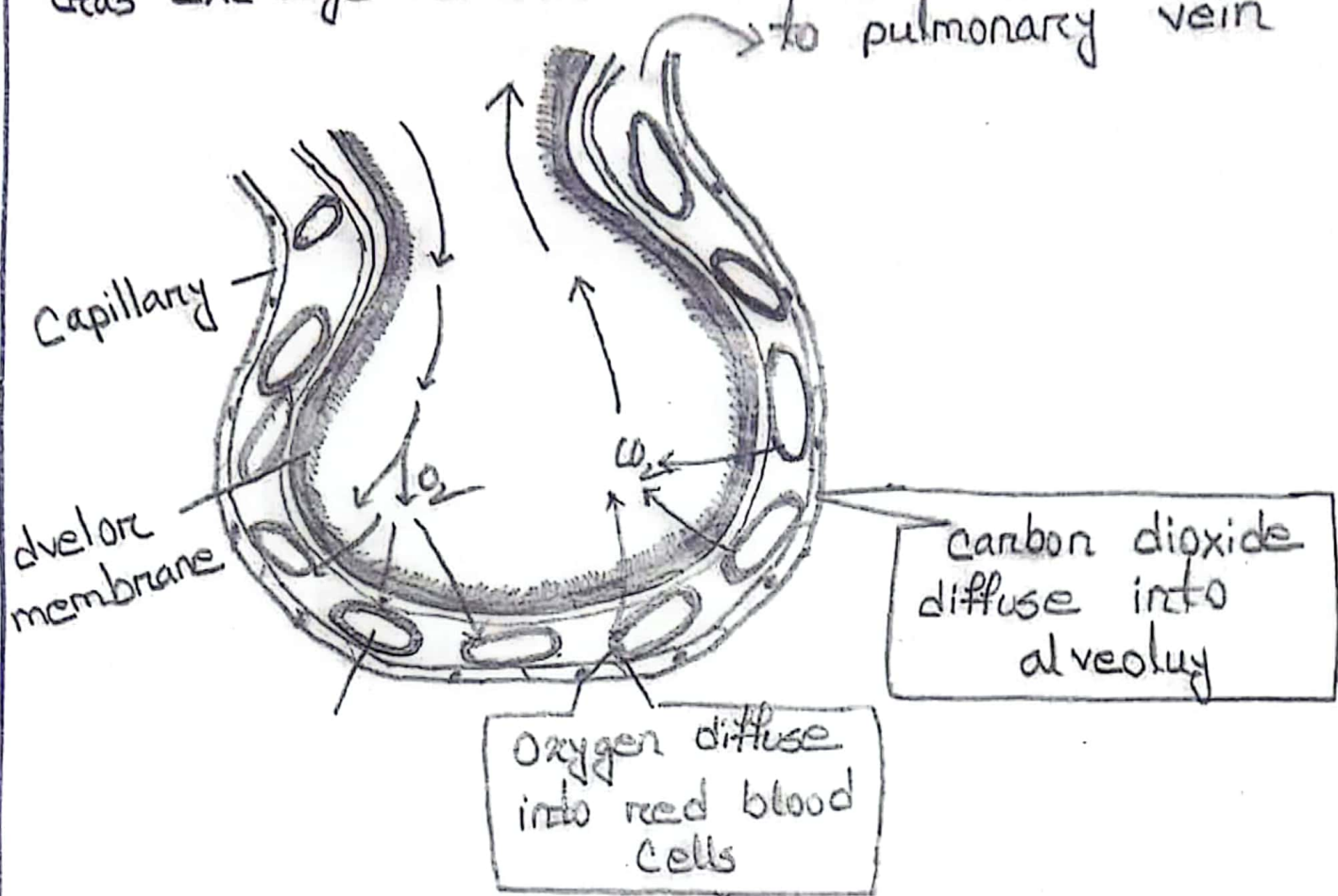


## Gas exchange between alveoli and capillaries



Human respiratory gas system:

1. Contaminated blood comes to capillaries by pulmonary artery.
2. High concentration of oxygen in Alveoli
3. Here, gas exchange occurs by diffusion process where oxygen moves from alveoli to capillaries
4. Carbon dioxide moves from blood vessel to alveoli due to the concentration process