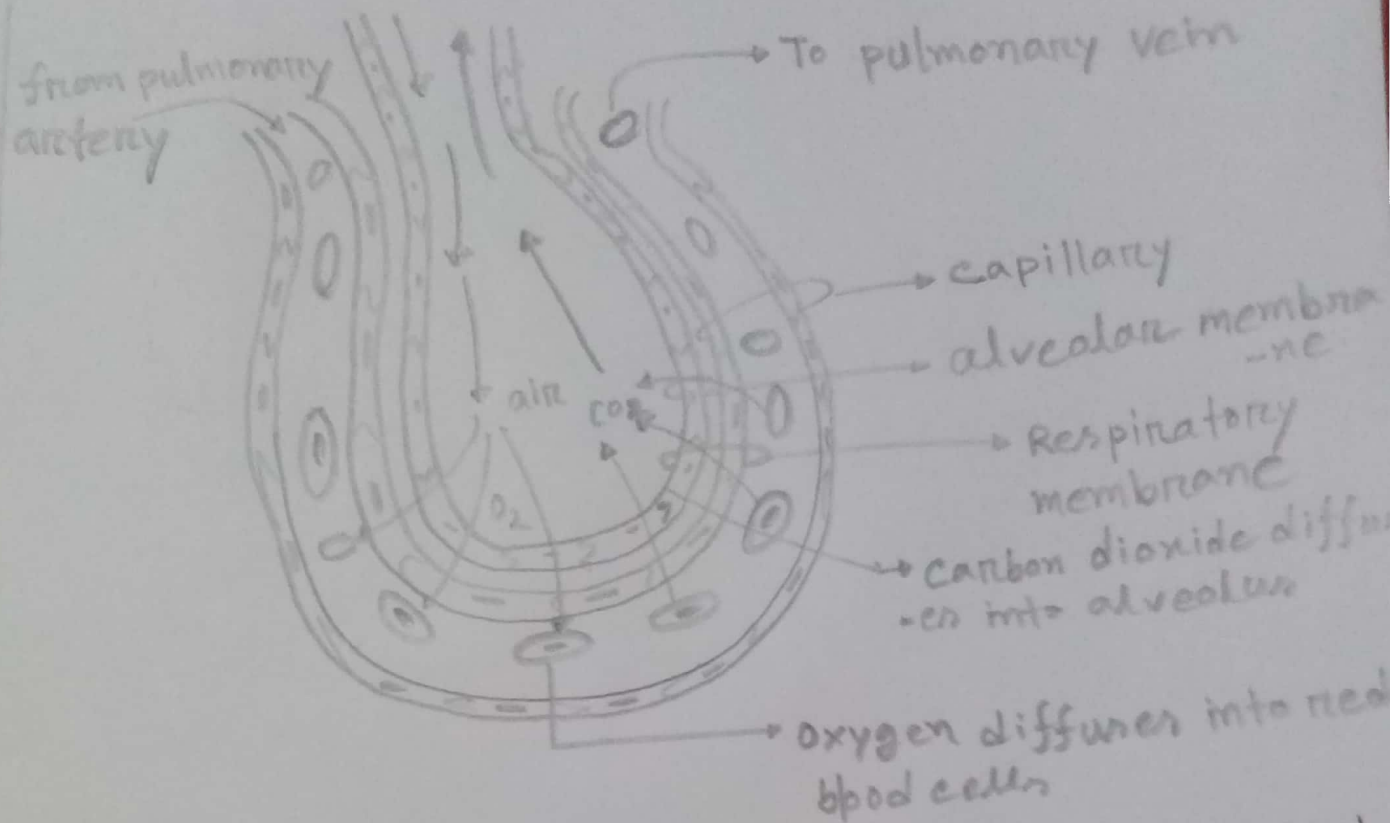


Gas exchange between alveoli and capillaries



Air containing oxygen is inhaled through nose which enters the alveoli. Oxygen from the air diffuses across the thin wall of alveoli and the capillary walls into the blood.

Carbon-dioxide, a waste product of cellular metabolism transported to the Lungs. CO_2 is diffused from the blood across the capillary and alveolar walls into the alveoli. Then CO_2 is expelled from the body through exhale.