

Basic Anatomy

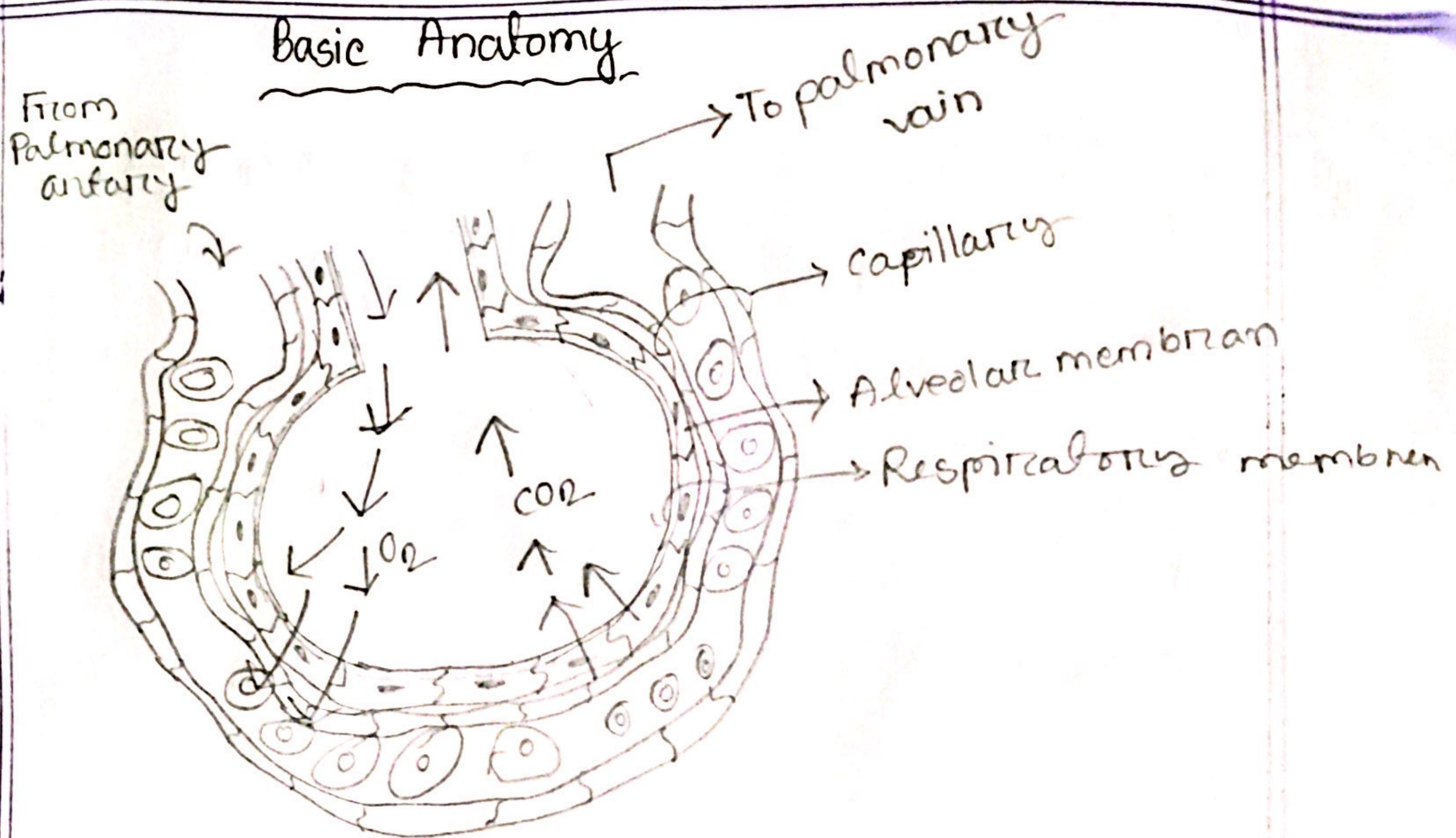
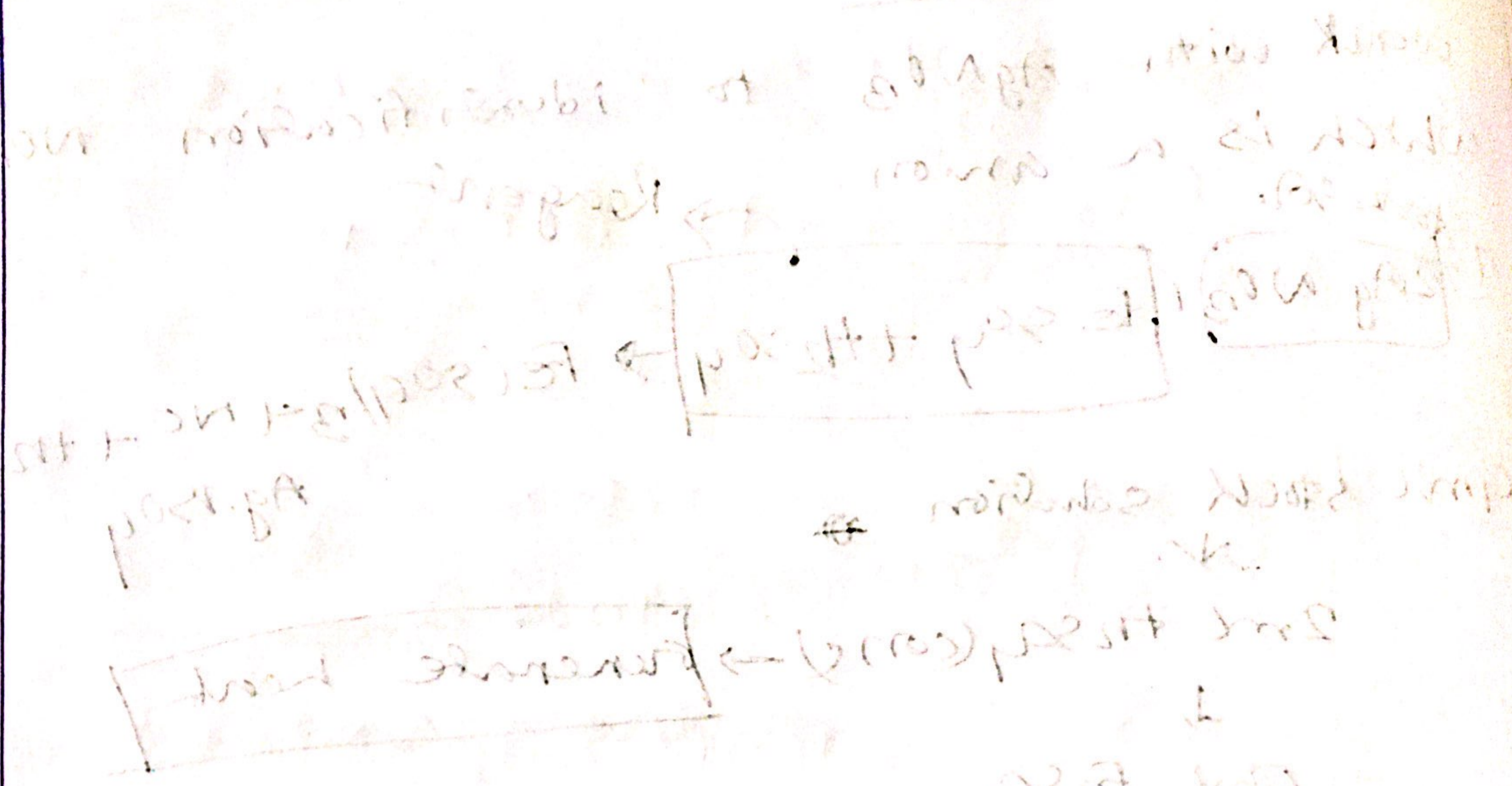


Fig:- Gas exchange between alveoli and capillaries.

- ⊛ From heart contaminated blood (CO_2 containing blood) go to the lungs by Palmonary artery.
- ⊕ When we breathe in, inhaled air flow through, the respiratory tract into the air sac. O_2 in the inhaled air dissolves with the contaminated blood. Since the O_2 concentration is higher than blood that's why O_2 diffused in blood.
- ⊛ In this same time, the concentration is high, ~~more than~~ that's why CO_2

(100%)



diffused in water.

* Now the CO_2 & O_2 is exchanged.
 The fresh blood go to the
 pulmonary vein.