

Lecture-5

```
graph TD; A[Lecture-5] --> B[Contents]; B --> C[Basic Concept of Dyeing]; B --> D[Classification of Chemicals]; B --> E[Jet Dyeing Machine];
```

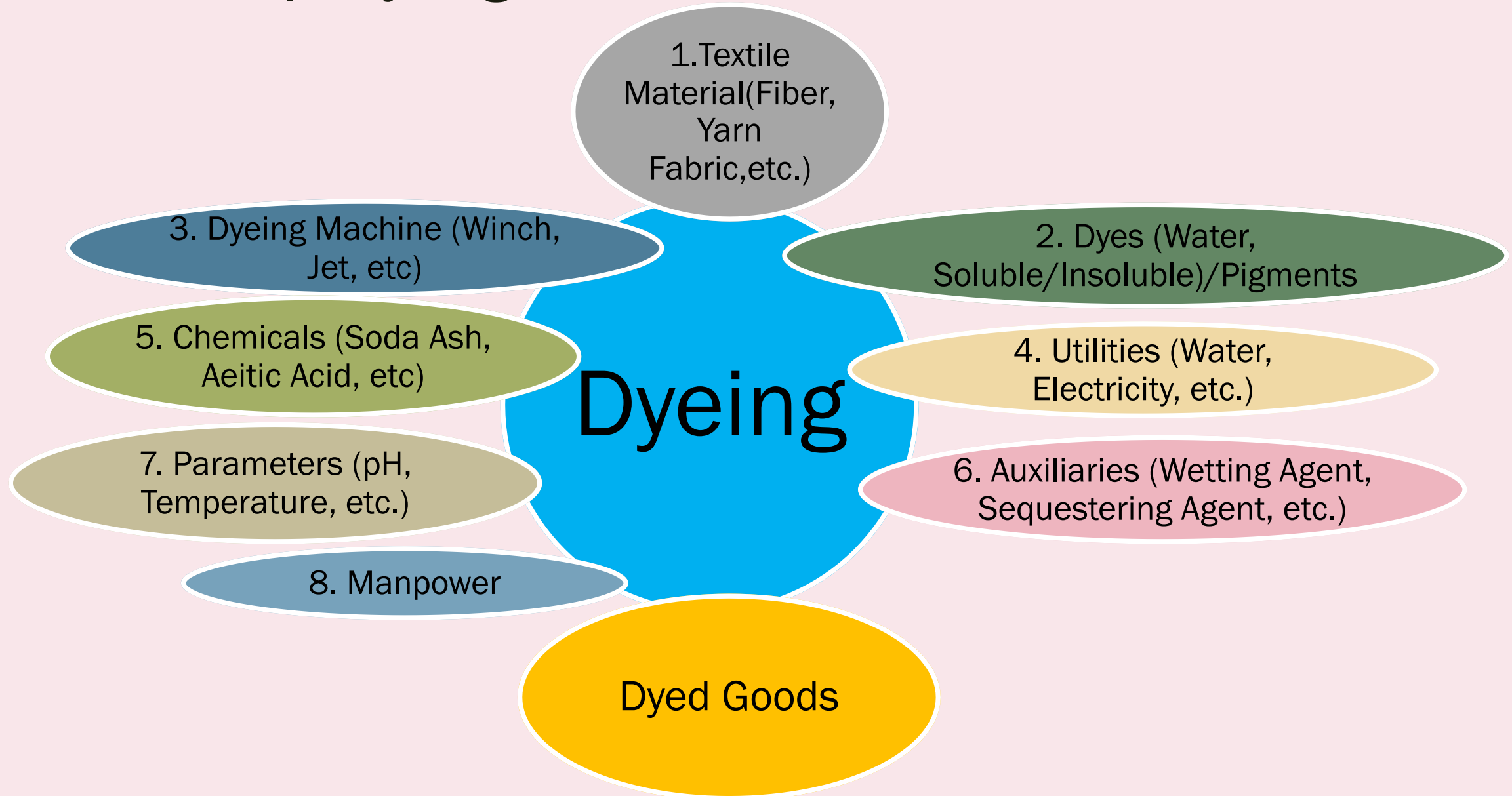
Contents

Basic Concept
of Dyeing

Classification
of Chemicals

Jet Dyeing
Machine

Basic Concept Dyeing:



Classification of Chemicals:

Chemicals in Textile Wet Processing

Basic Chemicals/ Chemicals

Essential for Process

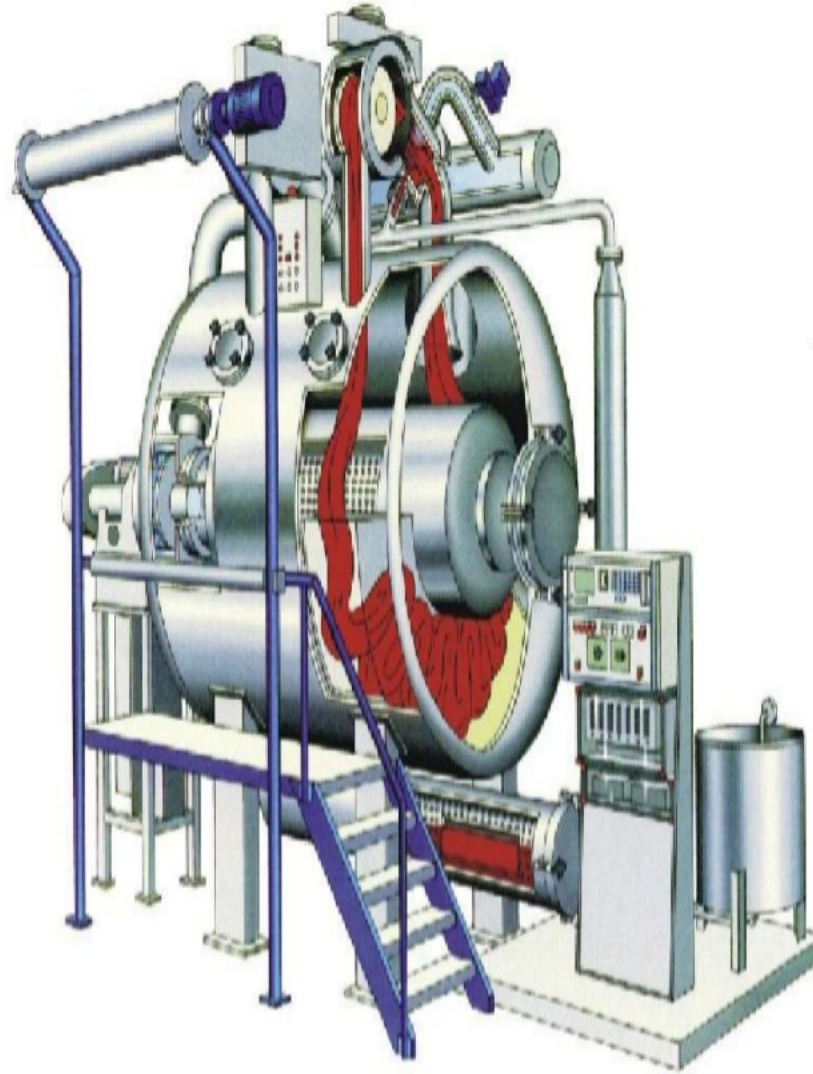
Example: Soda Ash in
Reactive Dyeing, NaOH
in Scouring

Auxiliary Chemicals/Auxiliaries

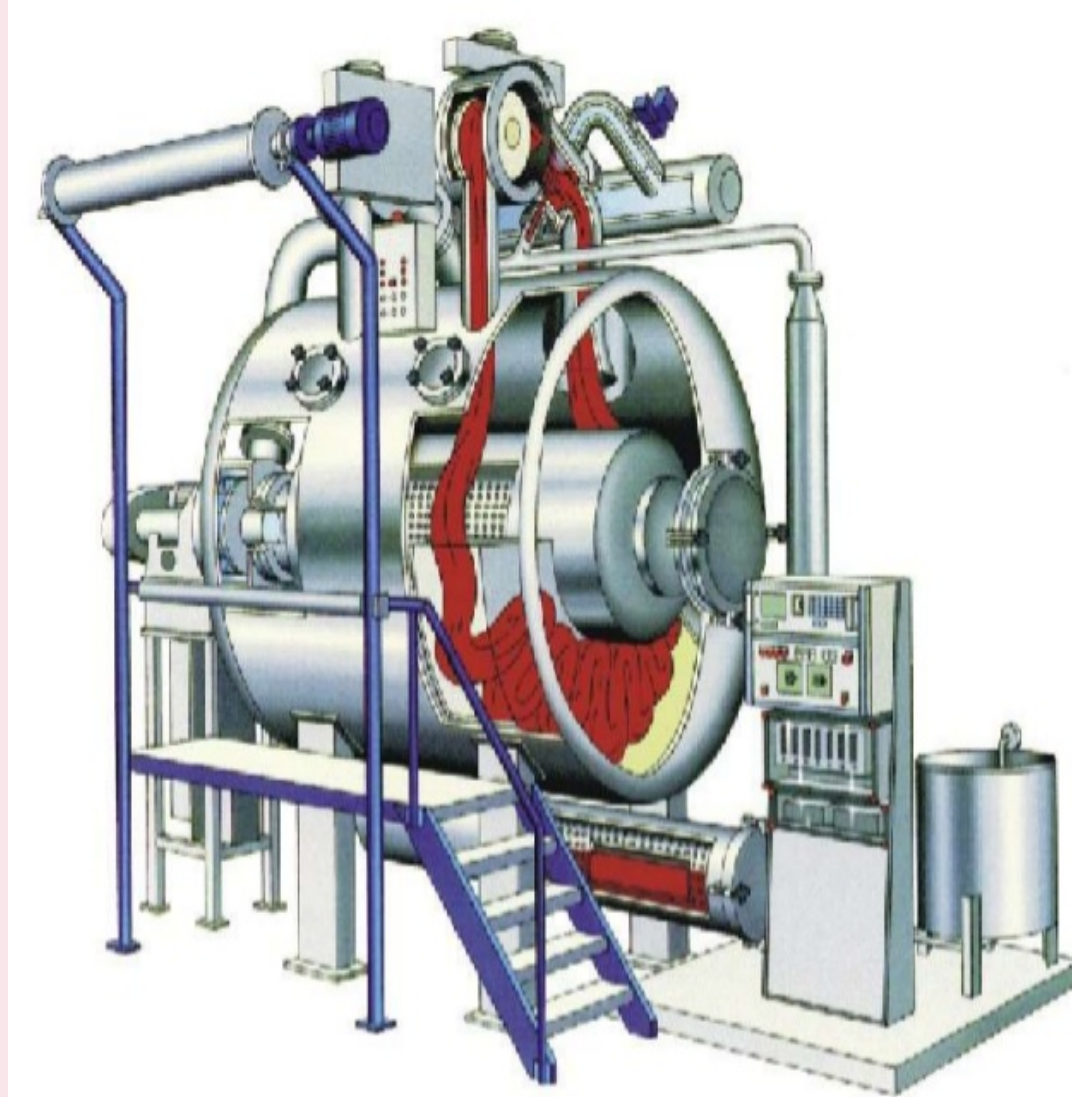
Not Essential for process,
but accelerate the process

Example: Wetting Agent,
Sequestering Agent, etc.

General Idea of a Jet Dyeing Machine



General Idea of a Jet Dyeing Machine (Continued):



Schematic diagram of Jet Dyeing Machines

